

WELCOME!

Thank you for attending our Community Information Session.
We are happy to share information about the proposed
Sprucewood Wind Project with you.

There are representatives of wpcd Canada available to discuss the
project with you.

Please sign in at the front desk then feel free to view our display
boards and speak to the Project Team.

Our team is here to provide information about the proposed project,
listen to your feedback and answer your questions.

Thank you for attending!

Who Are We?

Founded in 1996 and headquartered in Bremen, Germany, wprd group is a leading developer, owner and operator of wind projects and solar plants across over 30 countries

2,840 wind turbines installed

1,400 members of staff

7,175 MW installed to date

3.6 GW operating globally

8.0 GW PV solar in planning

Since its establishment in 2009, wprd Canada has successfully developed four onshore wind projects in Ontario.

North America



Asia



Europe

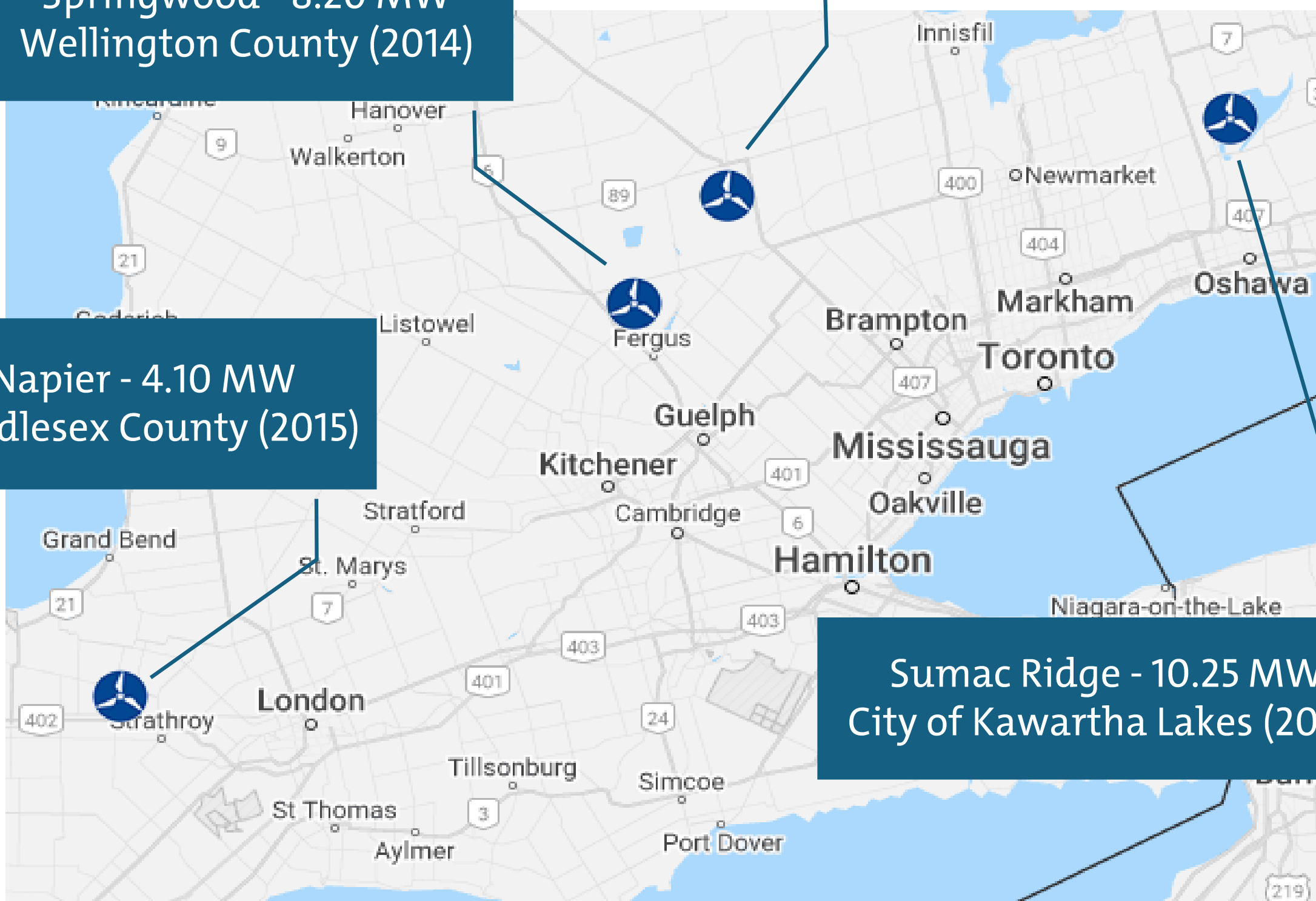


Springwood - 8.20 MW
Wellington County (2014)

Whittington - 6.15 MW
Dufferin County (2014)

Napier - 4.10 MW
Middlesex County (2015)

Sumac Ridge - 10.25 MW
City of Kawartha Lakes (2017)



Our Commitments

Indigenous Partnerships

Guiding Principles:

- Building strong relationships through ongoing, transparent, and effective communication and open dialogue
- Respect for the rights of Indigenous Nations, guided by UNDRIP
- Listening and learning to understand priorities, traditions, and culture
- Exploring opportunities for shared decision-making, training, and long-term benefits to First Nations, approaches may include:
 - Collaborative project development,
 - Equity partnership/revenue sharing,
 - Education/Training and Employment,
 - Community benefit agreements
 - Others



2025 Toronto office Clean up the World

Climate Protection & Sustainability

- ✓ Solely in renewable energy
- ✓ Annual carbon footprint tracking
- ✓ Marshland protection initiative
- ✓ Clean up the world initiative
- ✓ Climate protection projects



For our global climate protection initiatives please visit:
<https://www.wpd.de/en/wpd/sustainable-action-at-wpd/climate-protection-projects>

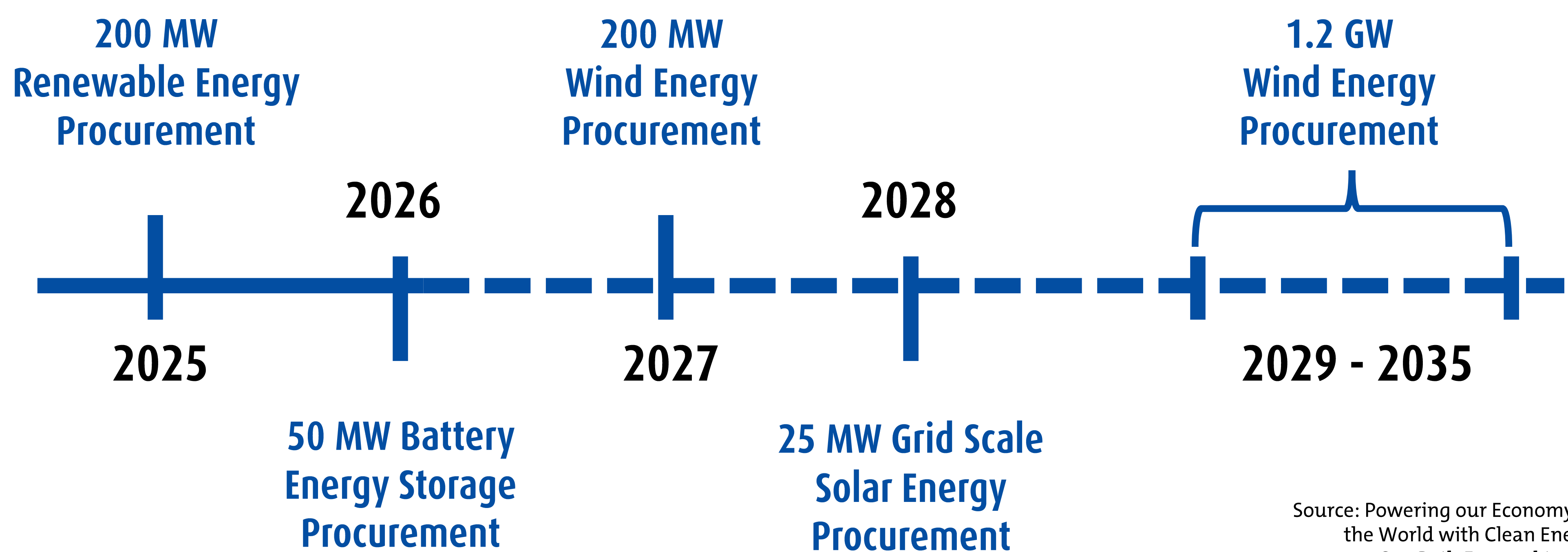
Why now? Why here?

New Brunswick - Path Forward to 2035

In 2023, the Government of New Brunswick announced their plan towards a net-zero electricity system through new carbon-free generation projects. To achieve these targets, the Province has planned to have 1400 MW of grid connected wind generation installed by 2035.

NB Power, in 2025, released a Request for Expression of Interest (REOI) for Renewable Electricity Generation (REOI # XXXX-25-I34-1) initiating the procurement of up to 200 megawatts (MW) of renewable energy projects in the province.

New Brunswick Energy Transition Roadmap 2023 to 2035



Source: Powering our Economy and the World with Clean Energy - Our Path Forward to 2035, Government of New Brunswick

Why Here?

This location in Strait Shores, NB offers the right combination of technical, environmental, and logistical factors for a successful wind energy project:

- Strong and consistent wind resource
- Available grid capacity
- Existing road infrastructure

Average Wind Speed at 100m



Sprucewood Wind Project

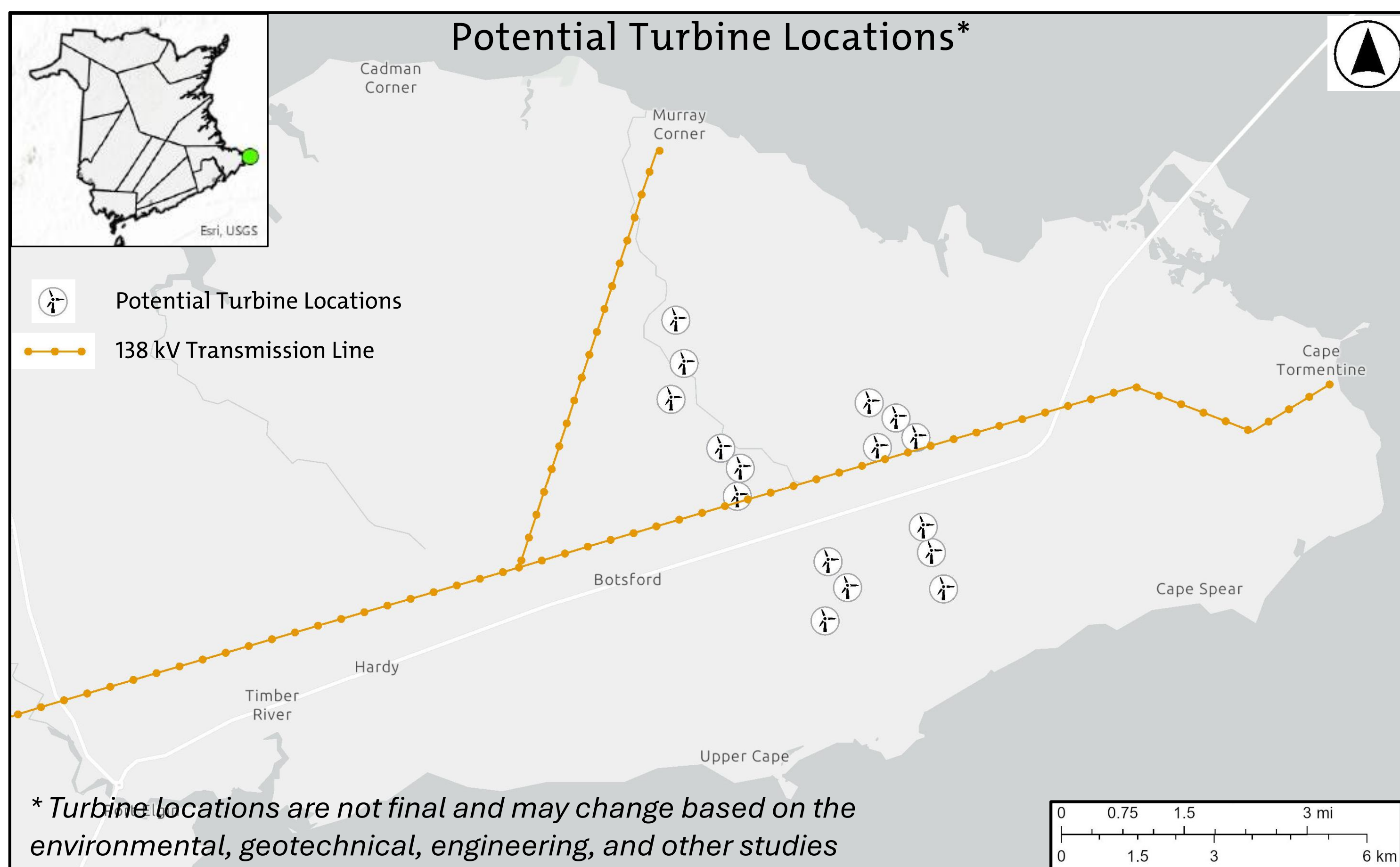
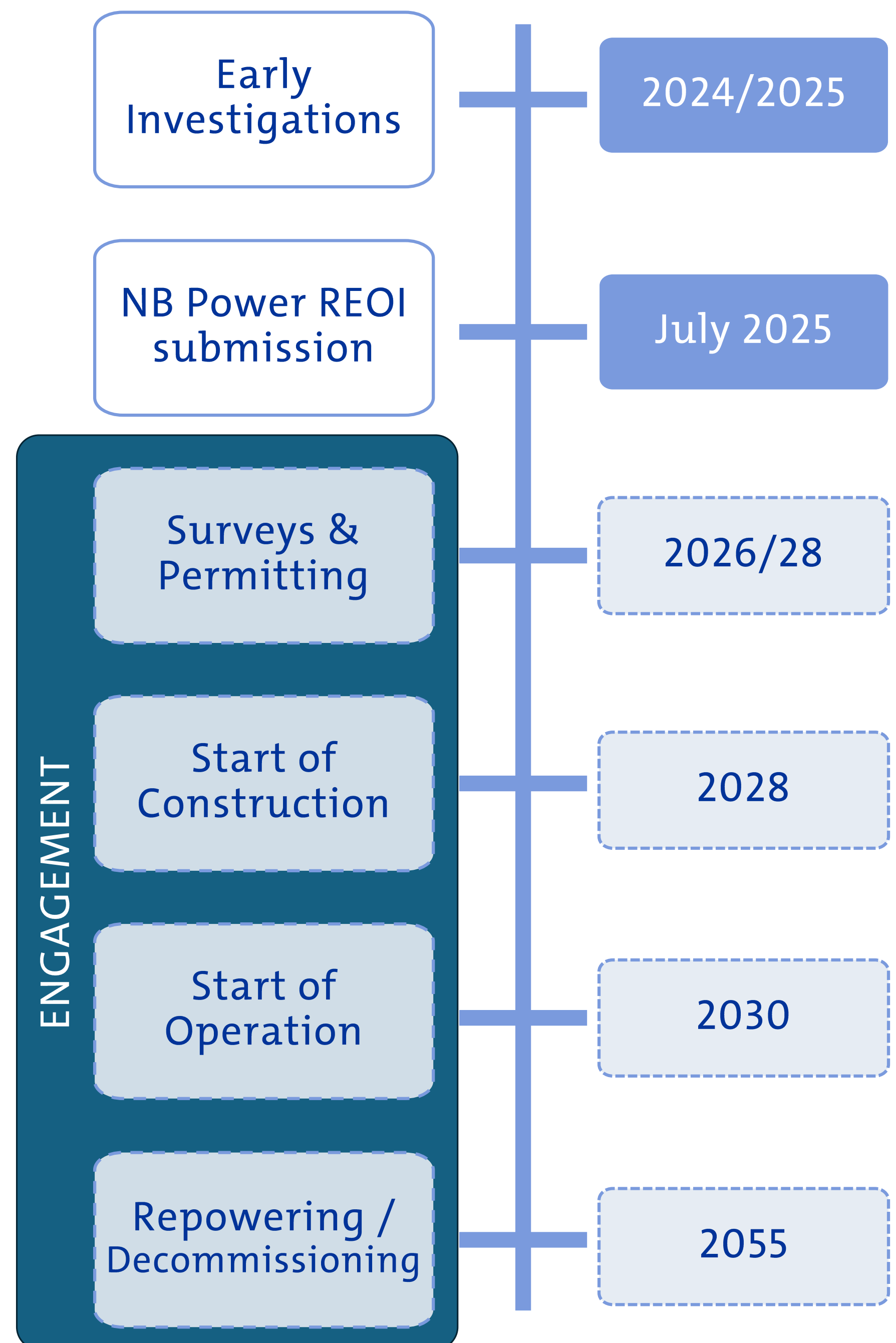
We are exploring the potential for a wind project with up to 120 megawatt (MW) of generating capacity or approximately 12 to 16 wind turbines.

The proposed project is expected to operate for 25+ years, and its size will depend on factors that include feedback from community members, the municipality, grid capacity studies, and environmental survey data.

Project Progress

- Wetland delineation completed in 2024
- Habitat mapping initiated in 2026
- Environmental surveys initiated in 2026
- Geotechnical investigation is planned for 2026

Project Timeline



Permitting & Approvals

Sprucewood Wind Project requires multiple permits and approvals before construction can start. Some of the major permits and approvals are:

- Environmental Impact Assessment - New Brunswick Department of Environment and Local Government
- Aviation Assessments - Transport Canada, NAVCAN
- Municipal Permit and Approvals

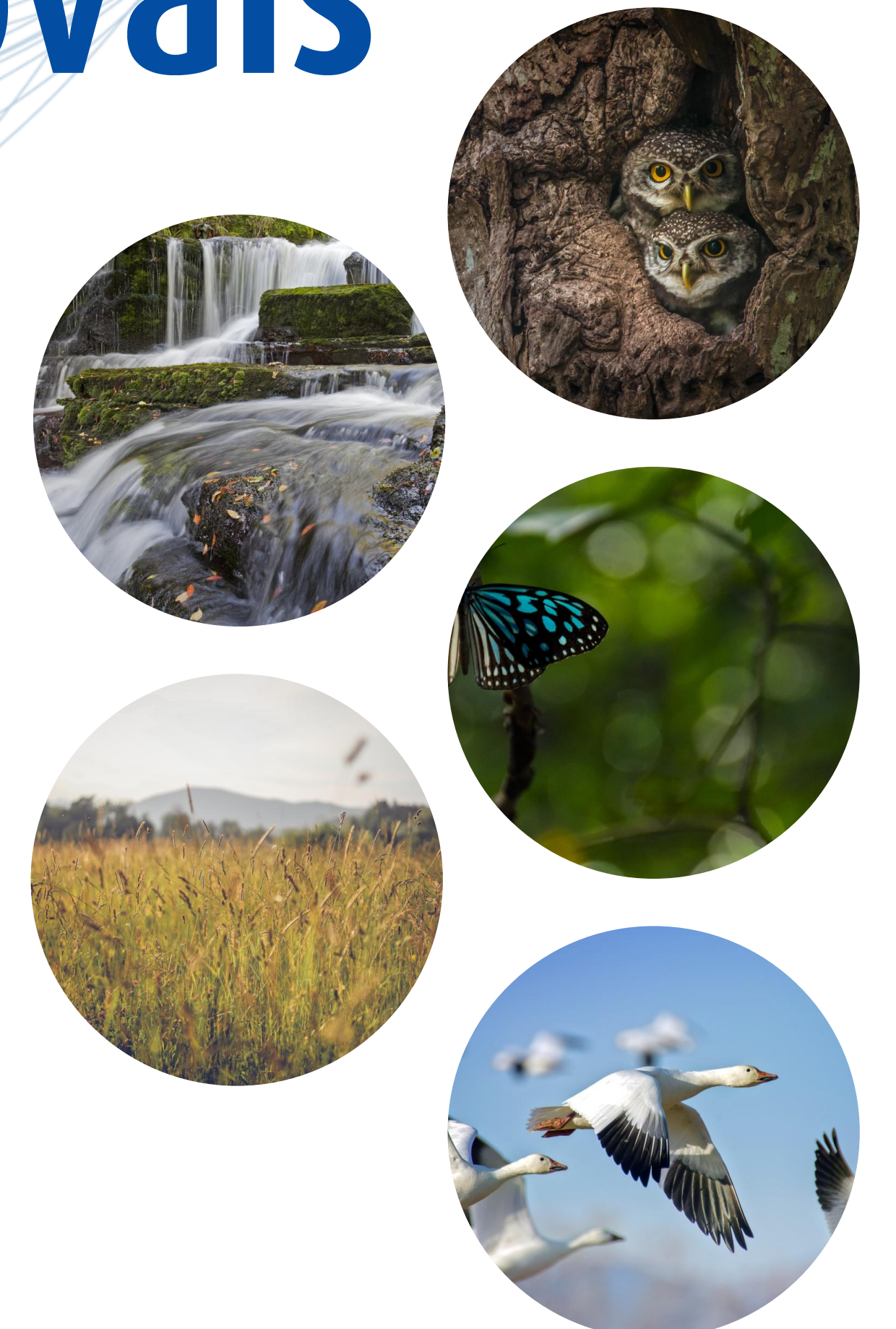
Applicable setbacks relevant to wind turbine siting in New Brunswick can be found in the documents *A Guide to Environmental Impact Assessment in New Brunswick* (NBDELG, 2023), and *Additional Guidelines for Wind Projects* (NBDELG, 2019).

These documents compile recommended setbacks and considerations related to human health and safety, environmental protection, and infrastructure compatibility. Prescribed setbacks and regulatory constraints for wind projects on private land are informed by several legislations and guidelines.

Environmental Impact Assessment & Studies

New Brunswick's Environmental Impact Assessment (EIA) Regulation provides a legislative framework for proactive planning and opportunities for public engagement. Typically for wind energy projects, studies and surveys listed below are completed. These would then form the basis of a future EIA application.

- Avifauna (Birds)
 - Spring & Fall Migration Surveys
 - Breeding Bird Surveys
 - Raptor Nest Surveys
- Chiroptera (Bats)
- Wetlands
- Aquatic Habitat and Fisheries
- Wildlife, Species at Risk (SAR) & Species of Conservation Concern (SOCC)
- Radar-Based Bird and Bat Collision Risk Assessment
- Archaeology
- Geology
- Electromagnetic Interference
- Noise Modelling
- Visual Impact Assessment



New Brunswick Wind Turbine Siting Standards	
Feature	Minimum Setback Requirement
Lakes, watercourses, wetlands.	30 meters
Coastal features (e.g., coastal wetlands, estuaries, beaches, dunes).	500 meters
Existing recreational, institutional and residential areas, and areas designated for those purposes in a plan adopted under the Community Planning Act.	500 meters
Telecommunication, fire, airport and other tower structures.	500 meters or 5 x the turbine height, whichever is greatest
Provincial parks, archaeological sites, historic sites, and heritage sites with tourism, commemorative, or religious/ceremonial components	1 km
Protected Natural Areas (PNAs)	150 meters, or 1.5 x height of turbine, whichever is greatest.
SARA Critical Habitat	500 metres
Important migratory bird nesting sites and migration routes (Migratory Birds Convention Act) and important water-bird breeding colonies (Fish & Wildlife Act);	1 km
Noise receptors (i.e., basic residences, schools, hospitals).	Noise assessment required for noise receptors within 1 km of the nearest
Bat migration routes and hibernacula	Additional survey requirements for siting within 5 km of a known hibernacula, or potential cave or abandoned mine. Bat presence will be assessed during baseline surveys.

Community Benefits

- **Tax Revenue:** Property tax payments will support services, infrastructure, and local initiatives for decades to come.
- **Community-Led Benefit Fund:** Tailored local support initiatives or community benefit programs based on the feedback received from hosting communities.
- **Local Contracting Opportunities:** During the construction and operations phases, wpcd Canada will rely on local supply chain and services.
- **Local Stimulus:** Local businesses will benefit from increased spending on goods and services during construction and operations phases.
- **Employment:** The project is expected to create jobs during construction.
- **Provincial Goals:** Low-cost, reliable, and renewable electricity to meet future energy demand and help achieve provincial 2035 net-zero goals.

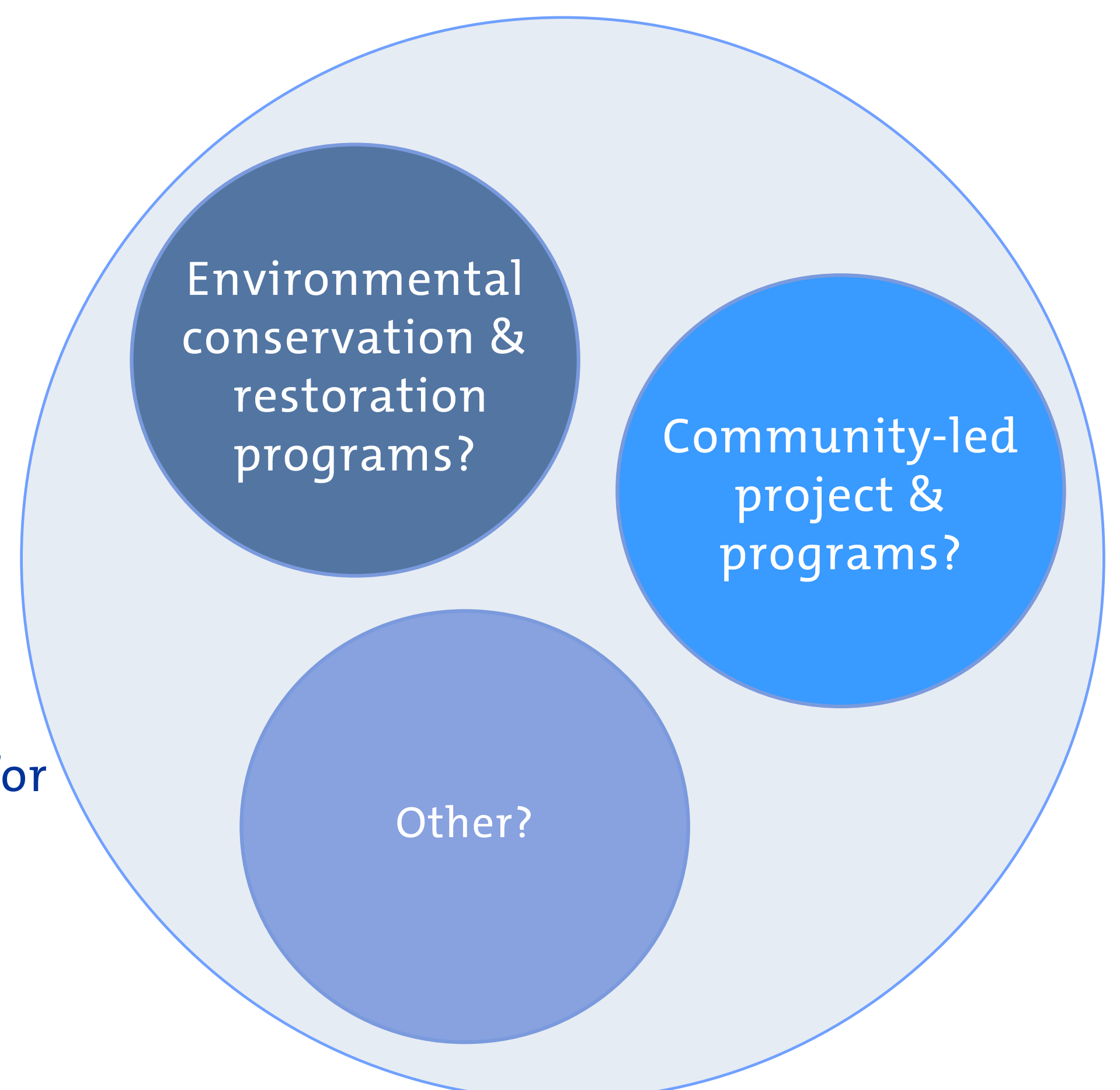
Depending on final project size we are expecting the Sprucewood Wind project to contribute 15 to 20 million dollars to the community over 25 years through property tax payments and community benefit programs.



Community-Led Benefit Fund



Annual payments for 25+ years



We are looking to develop the fund in collaboration with the community.

Public Engagement

Please share your questions and comments with us by filling out a feedback form.

We recognize the importance of transparency and ongoing collaboration with community members.

In this initial phase, we are seeking input and feedback from the community regarding the project concept and preferred engagement methods.

Additional public information sessions will be scheduled later in the process as we gather more information and as the proposed project develops.

Stay informed and involved:

Please sign up for our newsletter on the project website.

- <https://www.wpd-canada.ca/projects/sprucewoodwindproject/>

You can also contact the project team by emailing.

- sprucewoodwind@wpd-canada.ca

Copies of the display boards from this Public Information Session and the Presentation are available on the project website.

Thank you for coming!

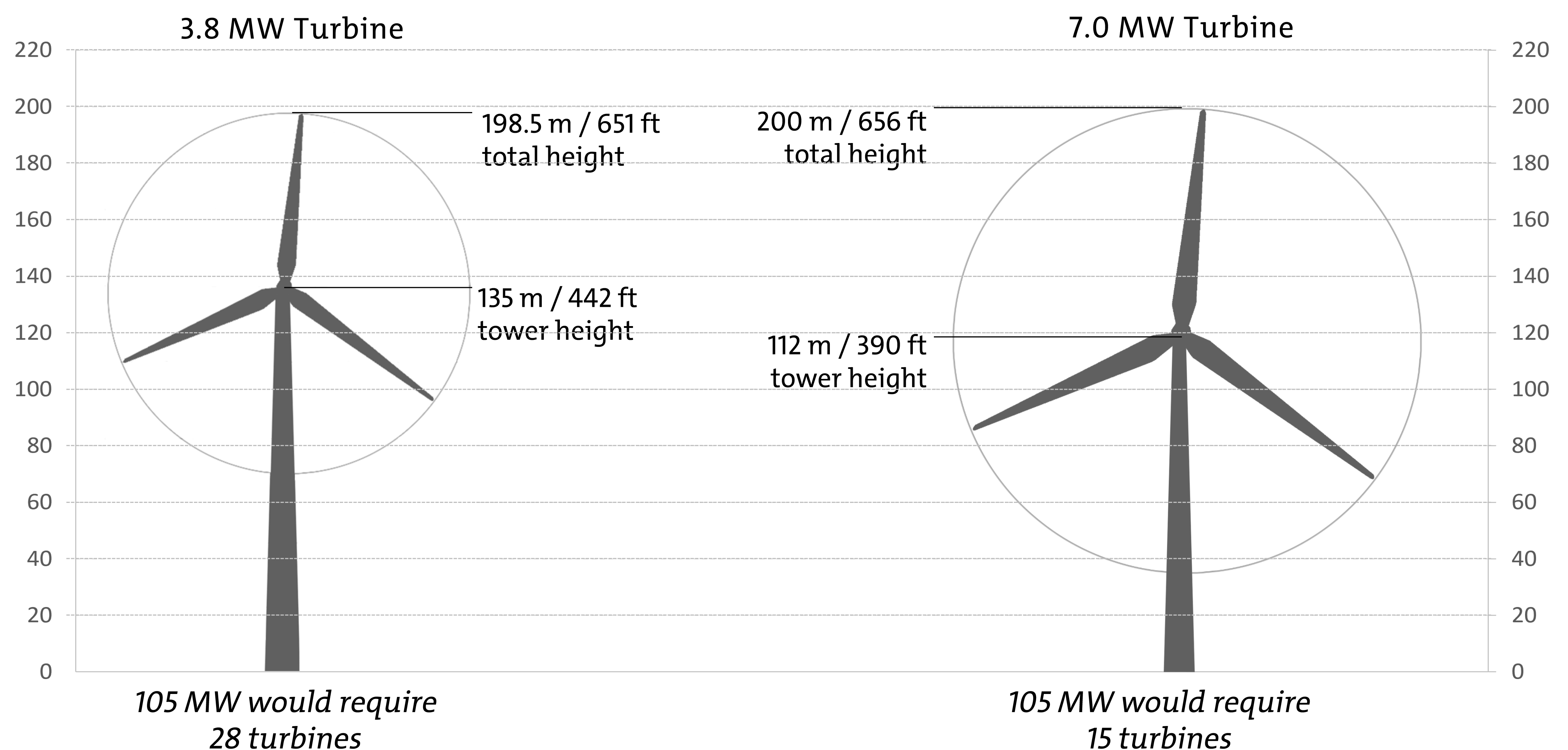


Turbine Size

Turbine sizes have increased in recent years resulting in increases to turbine efficiency and lower cost of the electricity generated. The large increases in power output per turbine mean that wind projects can now be built with fewer turbines.

- The turbines under consideration for the Sprucewood project could generate 6-8 MW of power with a one to two acre footprint per turbine
- Turbine technology is continuously under development and improvement. Modern turbines can generate far more power meaning projects can be built with fewer turbines
- A final selection of turbine for the Sprucewood project has not been made yet and will depend on the environmental data gathered and engineering considerations.

The figure below shows a comparison of dimensions for a turbine that is operational in Rexton and newer turbine models that are under consideration for the Sprucewood Wind project.



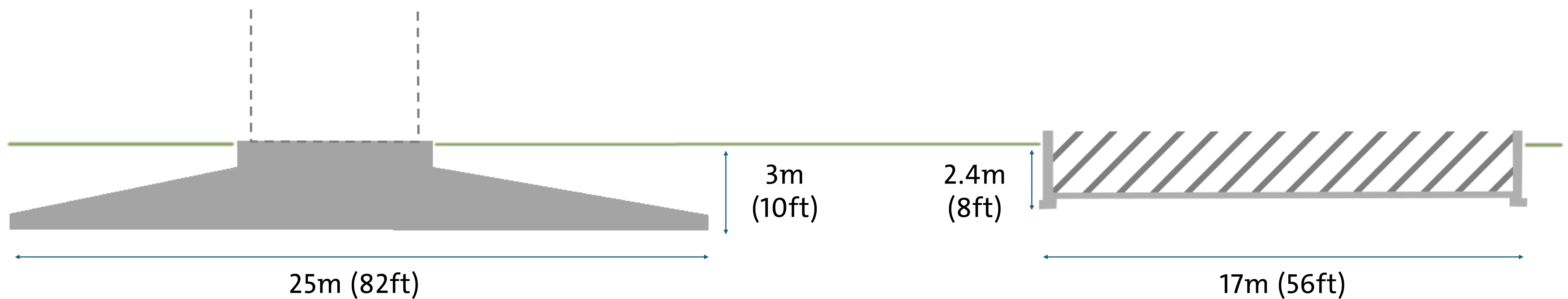
Turbine Foundations

Here is a description of the subsurface infrastructure that would form part of the project:

- The turbine foundation is likely to use a spread foot design made of steel reinforced concrete. A geotechnical survey will be required to produce a final design. The diagram below shows a typical design for the size of turbine under consideration for the project.
- Power cables that connect the turbines to each other and transport power to the project substation will be buried at a minimum depth of 1.5m (5 ft).

Example foundation dimensions* for a 7.0 MW turbine:

Example house foundation:



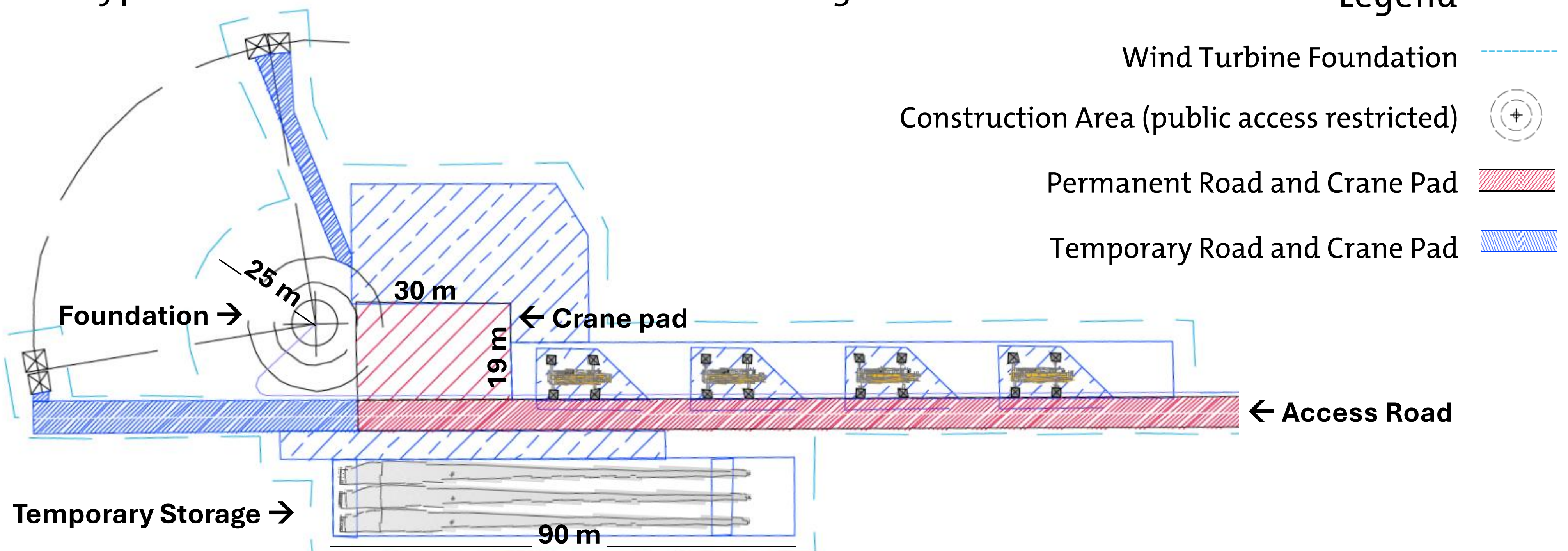
*Design will be finalized based on the geotechnical and engineering studies

What steps are taken to protect impacts to ground water?

- A geotechnical survey will be conducted to assess site-specific geological conditions, informing construction and foundation planning.
- Prior to final design and construction, we will review records of nearby water wells and utility mains to ensure the project will not impact them.

Typical Wind Turbine Construction Area Design

Legend



Sound Impacts

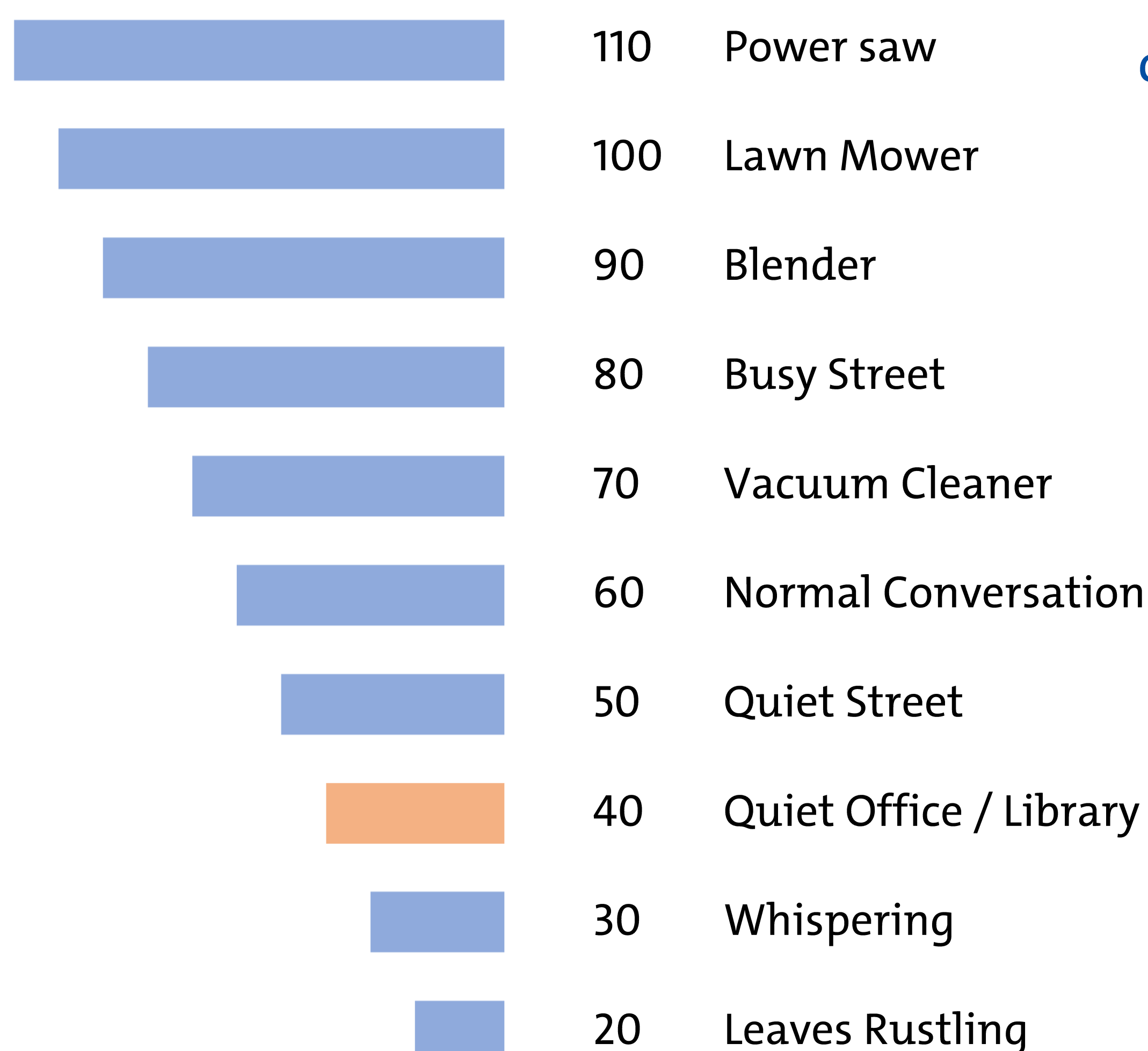
What about sound levels?

- Two potential sources of sound typically associated with wind turbines:
 - Aerodynamic Noise - The “swishing” sound as blades pass through the air
 - Mechanical Noise - From the gearbox and generator, housed in the nacelle
- As part of the project planning, acoustic modelling is conducted to predict noise levels from turbines under various operating conditions. This modeling helps ensure turbines are sited far enough from homes so that predicted sound levels stay below the 40 dBA.
- Turbines will be sited to ensure compliance with provincial regulations.

How does turbine size impact sound levels?

- Turbine noise levels are specific to each model and do not relate directly to their size. The noise levels can be predicted using manufacturer data and specialized software.

What does 40 dBA sound like?



We are committed to complying with all regulatory requirements and continuing to monitor and address concerns related to sound during the development, construction and operation of the proposed project

WHO & Health Canada recommended average outdoor noise level

Building a Wind Project: Step by Step

Constructing a wind energy project is a detailed, carefully planned process. From initial groundwork to long-term operations, each phase is designed to ensure safety, quality, and minimal disruption to the community and environment.

Construction starts after all approvals are in place and typically lasts 12-18 months. The timing may vary depending on seasonal conditions and restrictions.

- ❖ **Manufacturing:** Wind turbine components – such as towers, blades, and nacelles are manufactured and pre-assembled at the factory, then shipped to the wind project site where the final assembly takes place
- ❖ **Site preparation and construction:** Work crews prepare turbine sites by building access roads, preparing turbine foundations and reassembling turbine components, a crane is used to erect turbine towers and install the nacelles and rotors with their hubs and blades
- ❖ **Commissioning:** During the final construction phase, the electrical collection network is installed and connected to the grid through the substation. Final testing is completed before the wind project becomes fully operational
- ❖ **Operation and Maintenance:** Activities that are performed regularly throughout the project's life include daily monitoring of the wind turbines and function of the switching station, analyzing performance, and performing preventative maintenance and repairs on the turbines and other components of the facility. An online system will monitor the project 24 hours a day to identify any issues for quick response. An Emergency Response and Communications Plan will be developed prior to operation.

We are committed to keeping the community informed and minimizing disruption during construction. Updates will be shared through public notices, open houses, and the project website.

At wpcd Canada safety is our top priority throughout the entire project lifecycle. We are proud to have a zero lost-time incident record and maintain an exceptionally low incident/near miss rate of less than 0.2% of total hours worked.

Key Safety Measures:

- ❖ **Traffic Management Plan:** Developed in consultation with local municipalities to ensure safe traffic flow and delivery of materials.
- ❖ **Restricted Site Access:** Minimizing public exposure by limiting access to construction areas.
- ❖ **Emergency Response & Spill Plans:** Comprehensive plans including spill response, communication protocols, and all necessary cleanup equipment.
- ❖ **Public Health & Safety Protocols:** Established operations and maintenance practices designed to minimize risks to the surrounding community.
- ❖ **Rigorous Turbine Safety:** All turbines are thoroughly tested and certified to meet the highest safety standards.
- ❖ **Staff Training:** Operations staff are extensively trained on control systems to prevent accidents and malfunctions.

Your Safety is Our Priority

Decommissioning & Remediation

- Project components are expected to be in service for the 25+ years. At the end of the contract term, a decision will be made to continue operations, update equipment (called 'repowering'), or decommission the project.
- Decommissioning involves the removal of all project components for reuse or recycling, and restoring the land to pre-construction conditions, using relevant environmental protection and mitigation measures.
- wpcd is responsible for all aspects of the decommissioning of the project, including the associated costs.

wpcd has already successfully decommissioned a wind project in Canada and remediated the land for agricultural use. In compliance with local and provincial regulations, wpcd received very positive feedback from local landowners.



Beginning of Construction



During Construction



Decommissioned & Remediated



“wpcd Canada completed all necessary decommissioning actions, including the removal of project equipment and infrastructure. These measures were carried out to our full satisfaction, ensuring the property was returned to its original condition or better for agricultural use. We appreciate wpcd Canada’s diligence and professionalism in meeting its commitments and ensuring the proper remediation of the site” (Drew Harrison - Ontario landowner)